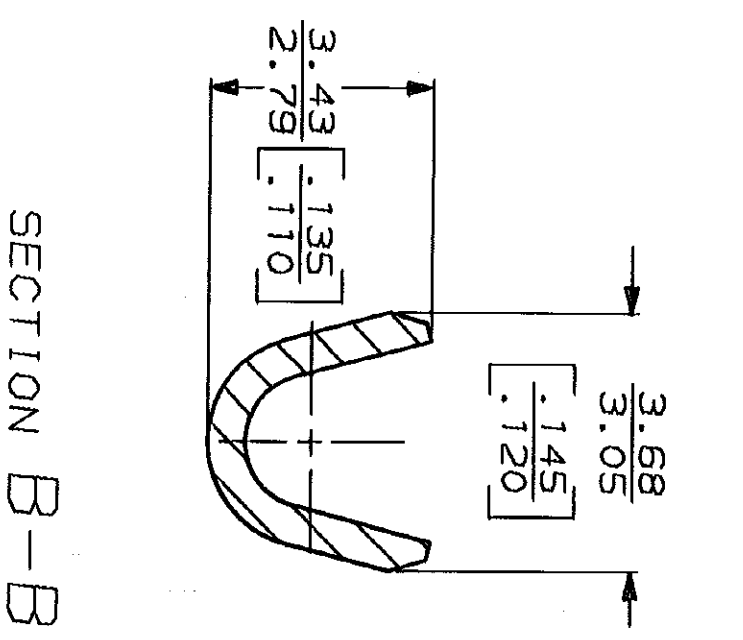
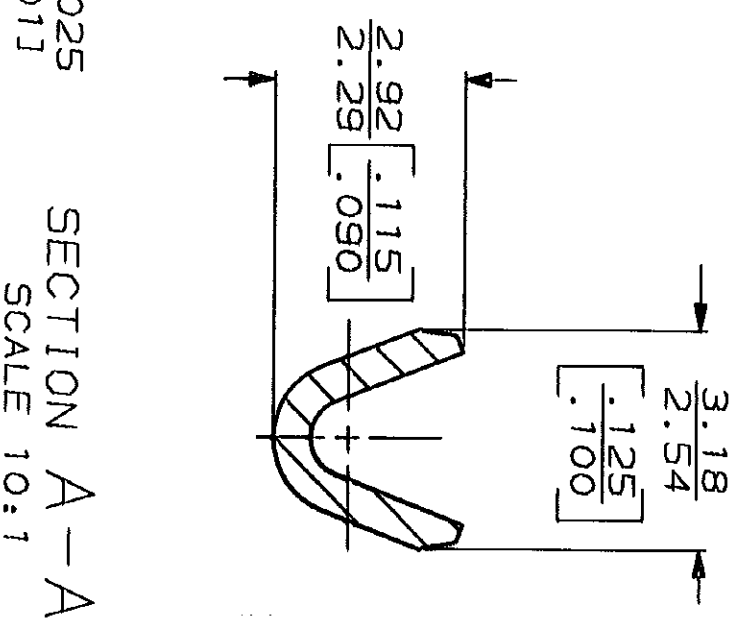
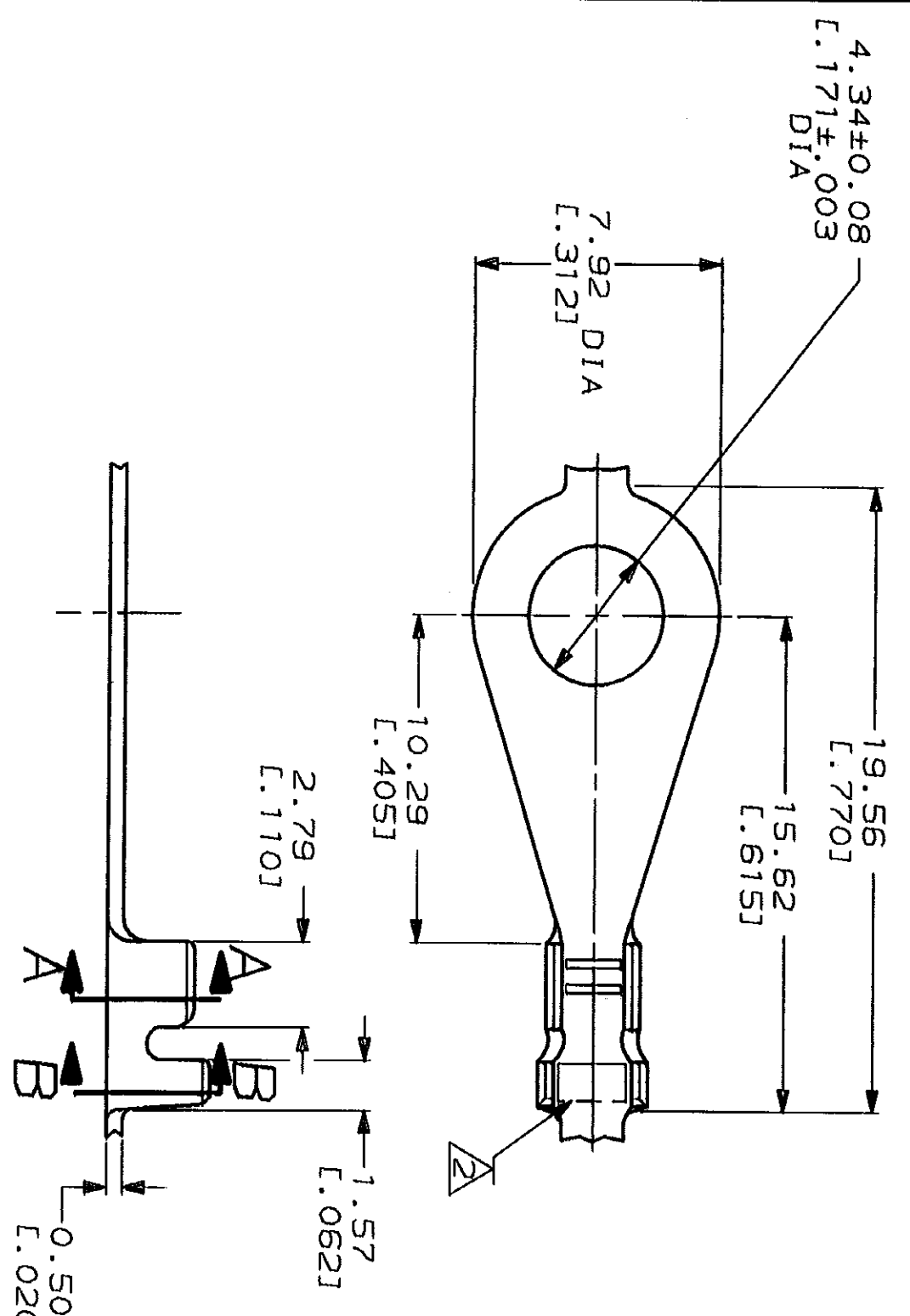


THIS DRAWING IS UNPUBLISHED. RELEASED FOR PUBLICATION BY AMP INCORPORATED. ALL INTERNATIONAL RIGHTS RESERVED. © COPYRIGHT 19 19

LOC	DIST	P	F	ZONE	LTR	DESCRIPTION	DATE	APPD
AF	50				G	ADD -3 PER 0247-93	7/30/93	PF/GY

REVISONS	DESCRIPTION	DATE	APPD
2	CONTINUOUS STRIP ON REEL.		
1	STAMPING: AMP FOR 42508-2 AMP* FOR 42508-3		



SECTION A-A
SCALE 10:1

SECTION B-B
SCALE 10:1

METRIC

TYPE	WIDTH	STRIP LENGTH ±0.38 [L.015]	TYPE	WIDTH	#0.051 E.002 HEIGHT	WIRE
0	2.29 [L.090]	4.32 [L.170]	F	2.03 [L.080]	1.40 [L.055]	0.6mm ² [L.20]
INSUL BARREL CRIMP			WIRE BARREL CRIMP		1.95 [L.053]	0.3mm ² [L.22]
					1.27 [L.050]	0.2mm ² [L.24]

MATERIAL	INSULATION RANGE	WIRE RANGE	PART NO
H02 PHOS BRZ	1.22-1.98 DIA [L.048-.078]	0.2 - 0.6mm ² [L.24-20]	42508-3
#2 HD BRASS			42508-2

DO NOT SCALE PRINT. DIMENSIONS SPECIFIED UNLESS SPECIFIED OTHERWISE IN MILLIMETERS (INCHES) TOLERANCES ON: 1. PLC DEC ± 0.25 [L.010] 2. PLC DEC ± 0.25 [L.010] 3. PLC DEC ± 0.25 [L.010] ANGLES MATERIAL SEE TABLE FINISH 0.002032 [L.000080] MIN TIN PL PER MIL-T-10727

DR	P FORNEY	CHK	JR RUTH	APPD	S/13/91	6 VETTER	APPD	S/13/91	R WELVILL	PRODUCT SPEC

NAME	AMP	Harrisburg, PA 17105-3608
AMP	AMP	AMP

SIZE	CASE CODE	DRAWING NO
B	00779	42508

SCALE	SHEET
5:1	1 OF 1